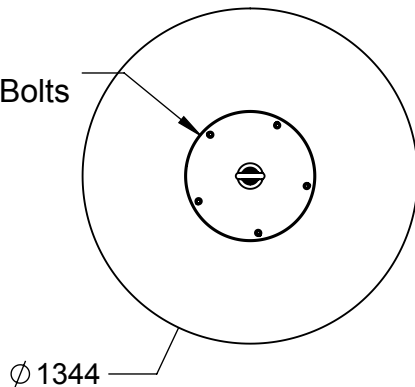
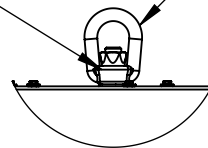


Ø 508
Load Plate
Fastened With 5 Bolts
Both Ends

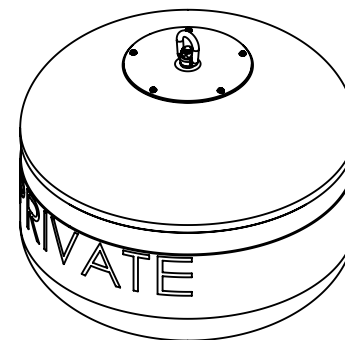


Locking Nut
Welded In Place
Both Ends

#8 Swivel Eye Nut
Both Ends



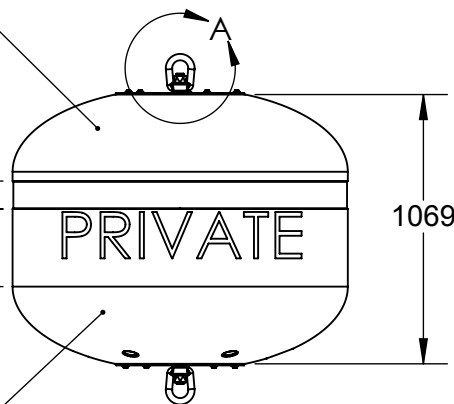
DETAIL A
SCALE 1 : 15



Top 3rd Orange

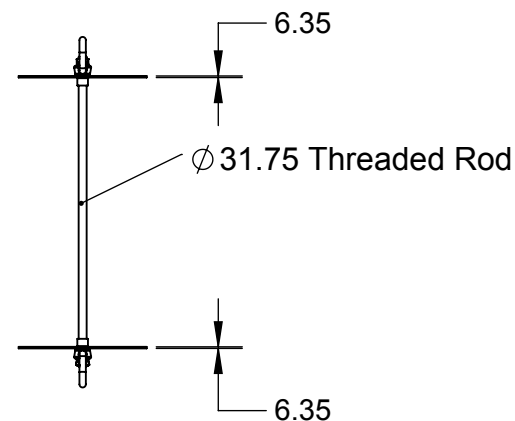
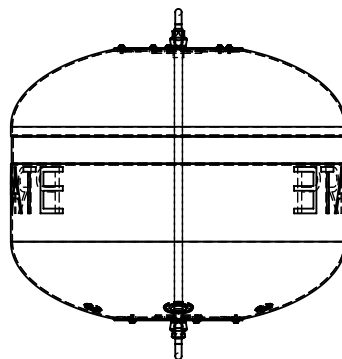
111

308



1069

Bottom White



Notes:

1. Total Displacement Approximately 1200 Litres
2. EPS Foam Filled.

PROPRIETARY AND CONFIDENTIAL

THE INFORMATION CONTAINED IN THIS DRAWING IS THE SOLE PROPERTY OF NORTHWEST PLASTICS LTD. ANY REPRODUCTION IN PART OR AS A WHOLE WITHOUT THE WRITTEN PERMISSION OF NORTHWEST PLASTICS LTD IS PROHIBITED.



200 - 1605 Industrial Ave.
Port Coquitlam, BC V3C 6M9
(604) 552-9734

DO NOT SCALE DRAWING

DRAWN BY	DATE
TK	08/22/16

DIMENSIONS ARE IN MILLIMETERS

TOLERANCES:
MOULDED FEATURES
+/- 1.5%

TRIMMED FEATURES
CNC +/- 0.75mm
MANUAL +/- 1.5mm

MATERIAL

MB 133 STANDARD ASSEMBLY W/
PRIVATE LABEL

SIZE	DWG. NO.
A	TK-018-001

SCALE:1:30

SHEET 1 OF 1