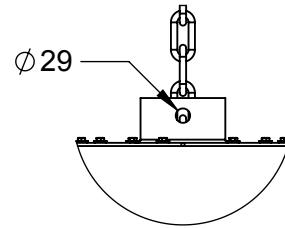
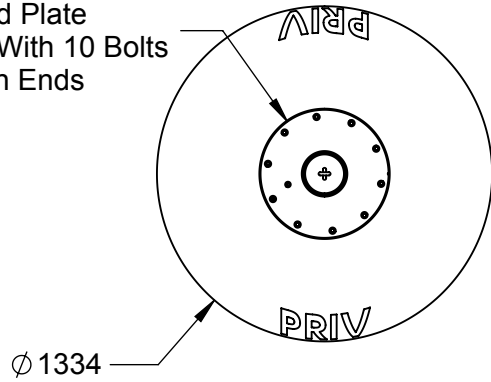
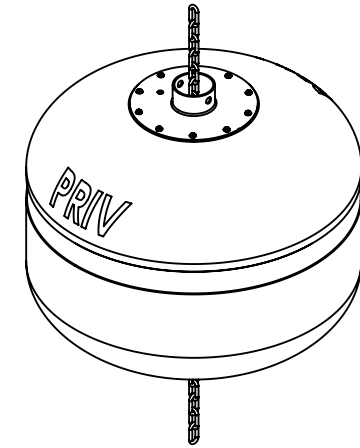


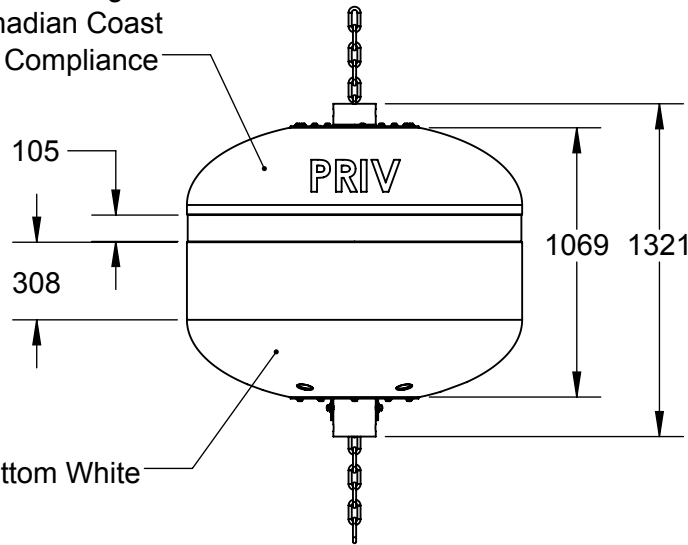
Ø 508  
Load Plate  
Fastened With 10 Bolts  
Both Ends



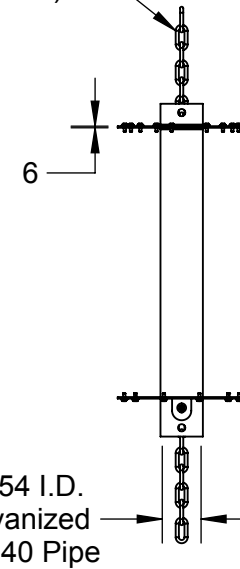
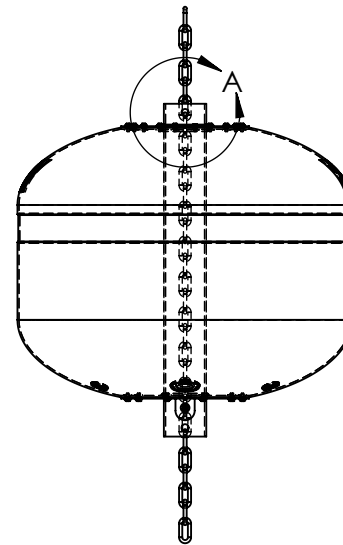
DETAIL A  
SCALE 1 : 15



Top 3rd Orange  
for Canadian Coast  
Guard Compliance



25 Mooring Chain  
(Not Included)



Notes:

1. Total Displacement Approximately 1200 Litres
2. EPS Foam Filled

PROPRIETARY AND CONFIDENTIAL

THE INFORMATION CONTAINED IN THIS DRAWING IS THE SOLE PROPERTY OF NORTHWEST PLASTICS LTD. ANY REPRODUCTION IN PART OR AS A WHOLE WITHOUT THE WRITTEN PERMISSION OF NORTHWEST PLASTICS LTD IS PROHIBITED.



200 - 1605 Industrial Ave.  
Port Coquitlam, BC V3C 6M9  
(604) 552-9734

DO NOT SCALE DRAWING

DRAWN BY	DATE
TK	08/22/16

DIMENSIONS ARE IN MILLIMETERS

TOLERANCES:  
+/- 1.5%

MB 133 HAWSER ASSEMBLY W/  
PRIVATE LABEL

SIZE	DWG. NO.
A	TK-019-001

SCALE:1:30

SHEET 1 OF 1